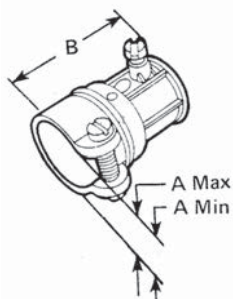


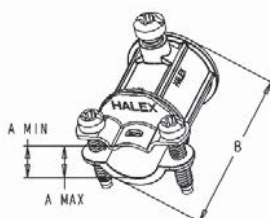
TRADE SIZE	HALEX PART #	CTN/CASE QTY	CTN/CASE WT (LBS)	DIMENSIONS (IN INCHES)	
				A	B
EMT-To-Flex Combination Couplings Zinc Die Cast					
<i>COMPRESSION TO SCREW-IN TYPE</i>					
1/2"-1/2"	04905B	50/500	4/40	0.84	1.00
3/4"-3/4"	04907B	25/250	2.8/27.5	0.95	1.19
1"-1"	04910	10	1.7	1.11	1.48

APPLICATION: INDOORS ONLY – Use to join EMT conduit to flexible metallic conduit. **MATERIAL:** Zinc Die Cast. **TYPE:** Compression To Screw-In. **SUITABLE FOR:** 1/2" steel, steel reduced wall, and aluminum flexible metal conduit to EMT, 3/4"-1" flexible metal conduit to EMT. **CERTIFICATIONS:** TO UL AND CSA REQUIREMENTS.



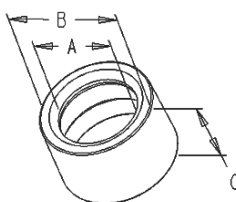
TRADE SIZE	HALEX PART#	CTN/CASE QTY	CTN/CASE WT (LBS)	DIMENSIONS (IN INCHES)		
				A	B	C
EMT-To-Flex Combination Couplings Zinc Die Cast						
<i>SET-SCREW TYPE</i>						
1/2"-1/2"	15305B	25/250	2.5/25	0.75	0.95	1.65
3/4"-3/4"	15307B	25/250	3.6/36	0.91	1.11	1.98

APPLICATION: INDOORS ONLY – Use to join EMT conduit to flexible metal conduit. **MATERIAL:** Zinc Die Cast. **TYPE:** Set-Screw. **CERTIFICATIONS:** TO UL AND CSA REQUIREMENTS.



TRADE SIZE	HALEX PART #	CTN/CASE QTY	CTN/CASE WT (LBS)	DIMENSIONS (IN INCHES)		
				A	B	C
EMT-To-Non-Metallic Combination Couplings Zinc Die Cast						
1/2"-NM	15303B	50/500	4/40	0.17	0.63	1.35

APPLICATION: INDOORS ONLY – Use to join EMT conduit to non-metallic sheathed cable (1) 14-2 to (1) 10-3, (2) 14-2 to (2) 12-3. **MATERIAL:** Zinc Die Cast. **TYPE:** Set-Screw. **CERTIFICATIONS:** TO UL AND CSA REQUIREMENTS.



TRADE SIZE	HALEX PART #	CTN/CASE QTY	CTN/CASE WT (LBS)	DIMENSIONS (IN INCHES)		
				A	B	C
EMT Insulating Bushings Polyethylene						
1/2"	75005B	100/1000	0.4/4.0	0.725	0.181	0.570
3/4"	75007B	75/750	0.35/3.5	0.940	1.030	0.760
1"	75010B	50/500	0.35/3.5	0.945	1.300	0.635
1 1/4"	75012B	25/250	0.25/2.5	1.240	1.655	0.625
1 1/2"	75015B	25/250	0.3/3.0	1.44	1.918	0.625
2"	75020B	25/250	0.45/4.5	1.870	2.380	0.625

APPLICATION: INDOORS ONLY – Use to protect cables from abrasion from edge of EMT. **MATERIAL:** Polyethylene. **FEATURES:** Holds firmly in place while pulling various cables, i.e. power, cable TV, telephone/modem, alarm/security systems. Meets 2008 NEC code requirements for 300.16 (B) protection.



TRADE SIZE	HALEX PART #	CTN/CASE QTY	CTN/CASE WT (LBS)	DIMENSIONS (IN INCHES)		
				A	B	C
EMT-To-Rigid Combination Couplings Steel						
<i>SET-SCREW TYPE</i>						
1/2"-1/2"	15304B	25	3.5			
3/4"-3/4"	15306B	25	6.1			

APPLICATION: INDOORS ONLY – Use to join EMT conduit to Rigid metal conduit. **MATERIAL:** Steel, Zinc Electro-Plate. **TYPE:** Set-Screw.

